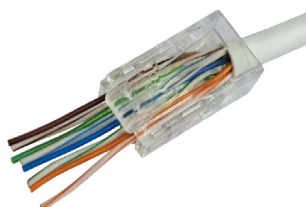


## CAT5E PLUG Pass

RJ45 connectors



Unshielded 8-pin RJ-45CAT 5E feed-through PLUG plug for connecting cables and making patch cords.



### Technical Chars

- RJ-45 UTP Category 5E feed-through plug
- 750 insertions guaranteed
- Maximum insertion force 20N
- ATM 1200; 1000BASE-T (Gigabit Ethernet); 1G FCBASE-T
- Easy to mount

CAT5E PLUG Pass		
Code		287708
Connector		CAT 5E RJ45 feed-through
Colour		Transparent
Total mating force		< 20N
Insertion-extraction life		> 750
Max. speed		ATM 1200; 1000BASE-T (Gigabit Ethernet); 1G FCBASE-T
Dielectric withstanding voltage		< 125 Vac (1000 Vac for 1 min)
DC pass	A	1.5 @25°C
Contact resistance	mΩ	20
Insulation resistance	mΩ	500
Impedence	Ω	< 0.1
Conformity		ROHS and REACH
Operating temperature	°C	-25 to +55
Dimensions and packaging		
Packing		Plastic container
Pieces		100
EAN code		8016978107629
Multiple EAN		8016978107636
Packaging dimensions	mm	85 x 85 x 100

